



MAHER
COMMERCIAL REAL ESTATE

FOR LEASE

-1,700 SQ. FT. RETAIL SPACE-
3906 PEACHTREE DRIVE
COLUMBIA, MO



UNIT 1-D
\$2,500 PER MONTH +
TRIPLE NET CHARGES

CALL JOHN HANCOCK
573-489-5201 MOBILE
573-228-6321 OFFICE
JOHNHANCOCK33@GMAIL.COM
WWW.MAHERCRE.COM



MAHER
COMMERCIAL REAL ESTATE

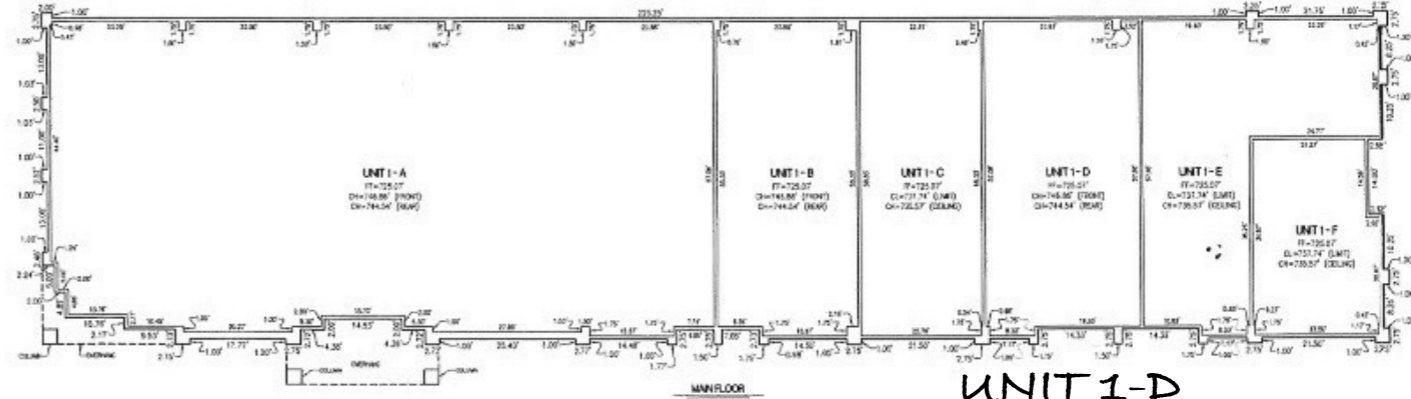
FILED FOR RECORD IN BOONE COUNTY, MISSOURI
MOORE METZLER, REGISTERED SURVEYOR

Recorded in Boone County, Missouri
06/22/2020 at 10:02:00 AM

PEACHTREE RETAIL CENTER CONDOMINIUM PLAT

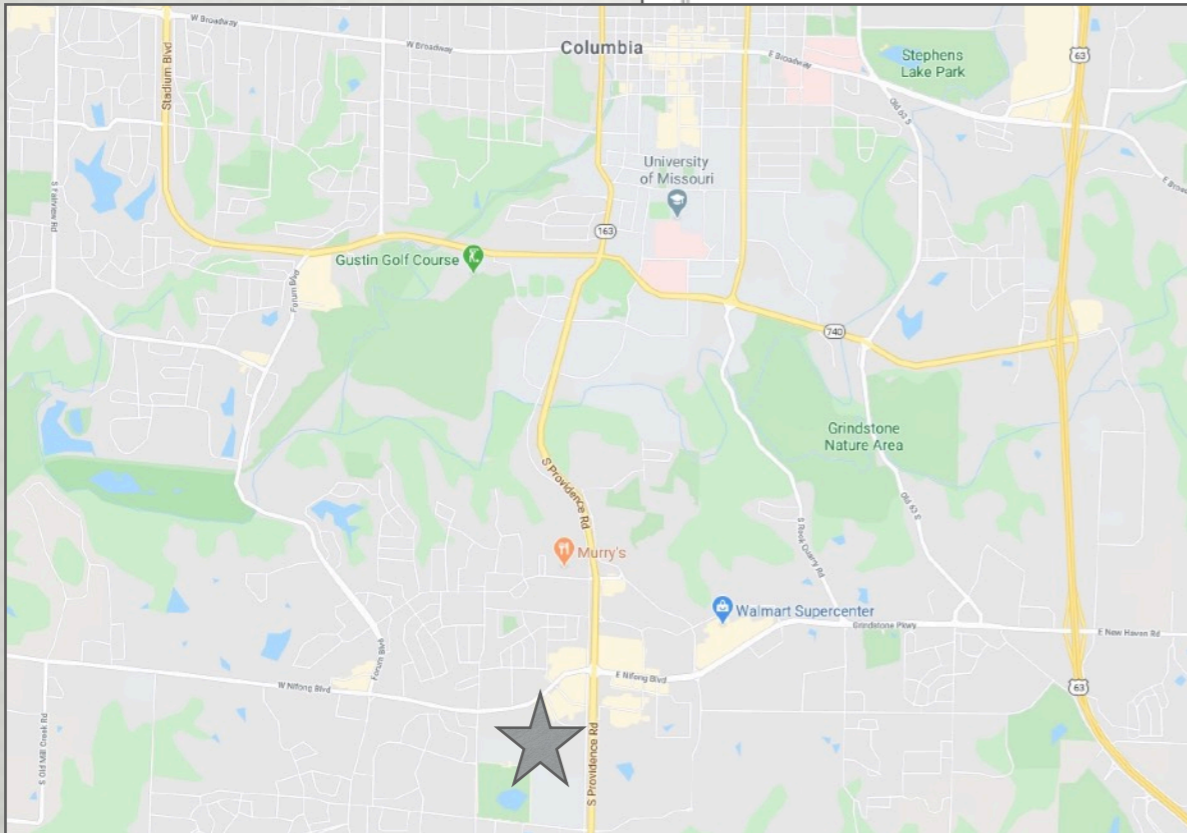
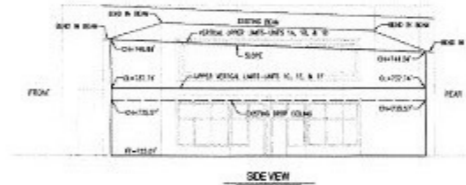
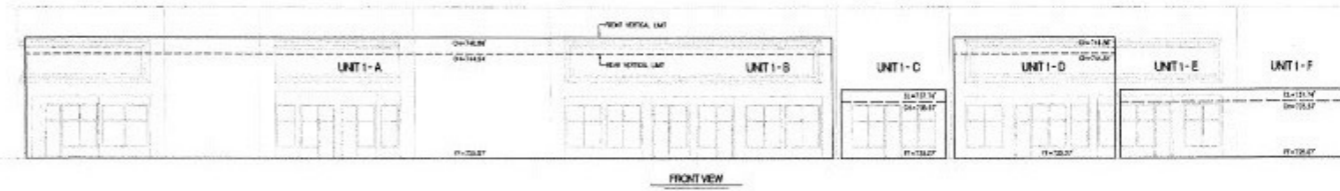
A CONDOMINIUM PLAT LOCATED IN THE SOUTHWEST QUARTER OF SECTION 26, & THE NORTHWEST QUARTER OF SECTION 36, ALL IN THE TOWNSHIP 48 NORTH, RANGE 13 WEST, COLUMBIA, BOONE COUNTY, MISSOURI
OCTOBER 31, 2019

LEGEND:
FF FINISH FLOOR
DF EXISTING HEIGHT
DL EXISTING LIMIT



**UNIT 1-D
FOR LEASE**

DIAGRAMATIC VIEWS OF BUILDING NUMBER 1
SCALE: 1" = 16'



SHEET 2 OF 2

PEACHTREE RETAIL CENTER CONDOMINIUM PLAT
A CONDOMINIUM PLAT LOCATED IN THE SOUTHWEST QUARTER OF SECTION 26 & THE NORTHWEST QUARTER OF SECTION 36, ALL IN THE TOWNSHIP 48 NORTH, RANGE 13 WEST, COLUMBIA, BOONE COUNTY, MISSOURI

CORPORATE NUMBER: 20000000

CRACKETT
ENGINEERING CONSULTANTS
1800 N. HANCOCK BL., SUITE 100
COLUMBIA, MISSOURI 65201
www.crocketting.com

DATE: 10/31/19
PROJECT: AS SHOWN
DRAWN BY: JHP
CHECKED BY: JHP

CALL JOHN HANCOCK
573-489-5201 MOBILE
573-228-6321 OFFICE
JOHNHANCOCK33@GMAIL.COM
WWW.MAHERCRE.COM